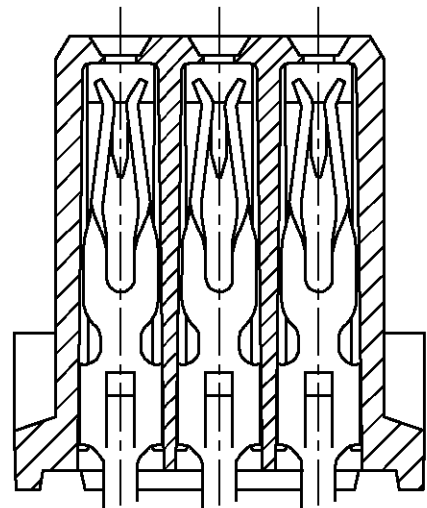


P.C.B. HOLE DIM. ACTION PIN

DRILLED HOLE	:1,15 ±0,025	mm
FIN. HOLE	:0,94 to 1,09	mm
AFTER REFLOW	:0,91 to 1,09	mm
Cu-thks	:0,025 to 0,075	mm
SnPb-thks	:0,004 to 0,010	mm

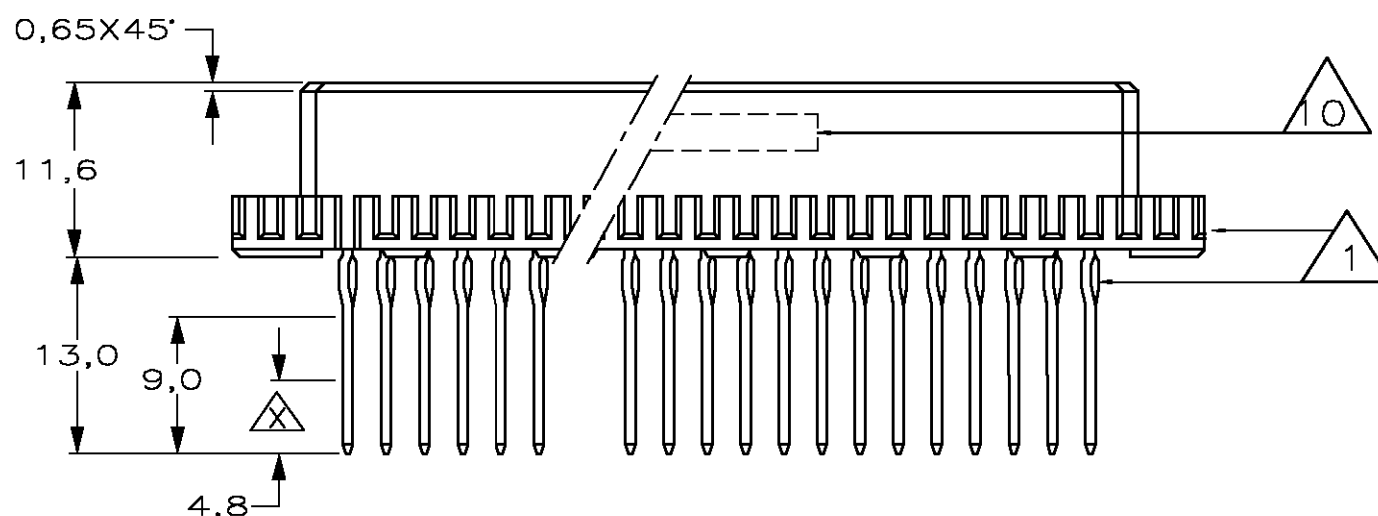
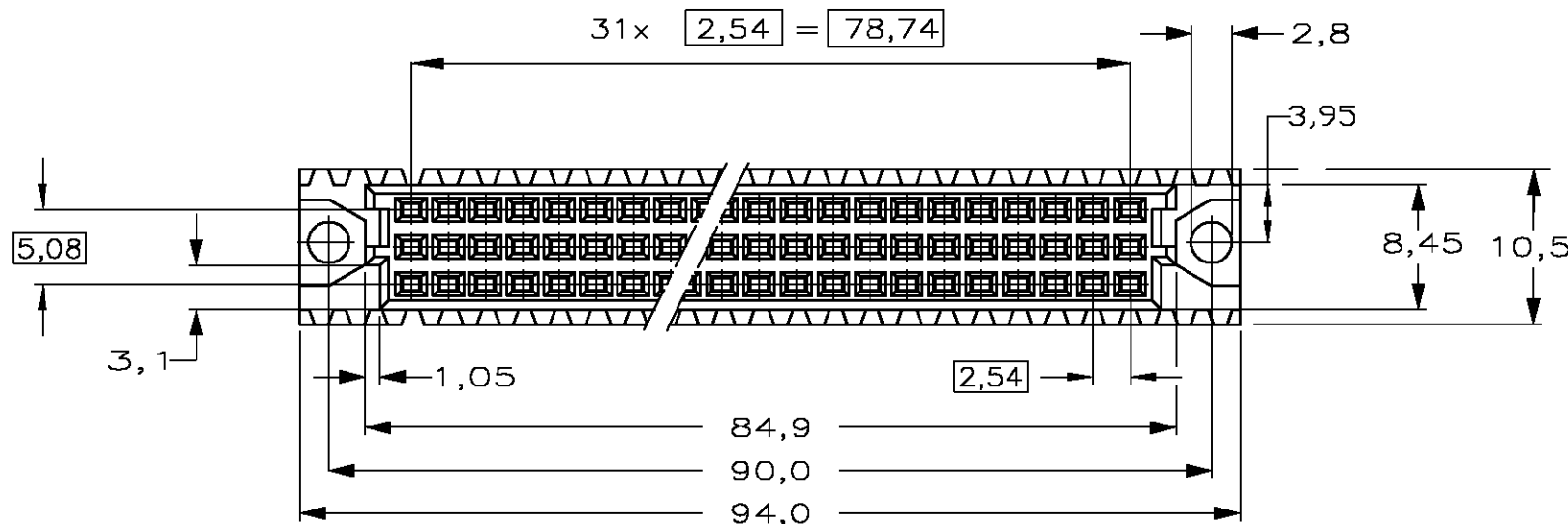
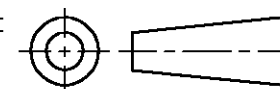


DO NOT SCALE

DIMENSIONS IN mm

METRIC

THIRD ANGLE  
PROJECTION



NOTES:

- 1 CONNECTOR MEETS THE REQUIREMENTS ACC. IEC 603-2 AND DIN 41611, PART 2 AND 5.
- 2 MATERIAL CONTACT: COPPER ALLOY. MATERIAL HOUSING: GLASSFILLED THERM. POLYESTER.
- 3 AT CONTACTAREA Au OVER Ni PERFORMANCE LEVEL I ACC. IEC 603-2. REMAINDER TIN-LEAD.
- 4 AT CONTACTAREA Au OVER Ni PERFORMANCE LEVEL II ACC. IEC 603-2. REMAINDER TIN-LEAD.
- 5 AT CONTACTAREA AND AREA  $\Delta$  Au OVER Ni PERFORMANCE LEVEL I AT ACTION-PIN AREA TIN-LEAD.
- 6 AT CONTACTAREA AND AREA  $\Delta$  Au OVER Ni PERFORMANCE LEVEL II AT ACTION-PIN AREA TIN-LEAD.
- 7 AT CONTACTAREA AND AREA  $\Delta$  Au OVER Ni PERFORMANCE LEVEL III AT ACTION-PIN AREA TIN-LEAD.
- 8 AT CONTACTAREA AND AREA  $\Delta$  Au OVER Pd OVER Ni PERFORMANCE LEVEL II AT ACTION PIN AREA TIN-LEAD.
- 9 AT CONTACTAREA AND AREA  $\Delta$  Au OVER Pd OVER Ni PERFORMANCE LEVEL III AT ACTION PIN AREA TIN-LEAD.
- 10 CONNECTOR PRINTED WITH PARTNUMBER AND DATECODE ON OUTSIDE OF MATING AREA OF ROW c.

	FINISH	MATERIAL	PARTNUMBER
OBSOLETE	9	2	<del>7-215912-8</del>
OBSOLETE	8	2	<del>7-215912-4</del>
OBSOLETE	7	2	<del>1-215912-8</del>
	6	2	1-215912-4
	5	2	1-215912-1
	4	2	215912-4
OBSOLETE	3	2	<del>215912-1</del>

ROW	c	XX																															
d	b	XX																															
u	a	XX																															
POS		32	31	30	29	28	27	26	25	24	23	22	21	20	19	18	17	16	15	14	13	12	11	10	9	8	7	6	5	4	3	2	1

AN ASTERISK „X” DENOTES A SIGNAL CONTACT.

—	—	—	—	—	CUSTOMER DRAWING		FOR REFERENCE ONLY WILL NOT BE UPDATED	
—	—	—	—	—	© COPYRIGHT 20 — BY Tyco Electronics EC N.V. ALL INTERNATIONAL RIGHTS RESERVED. Tyco PRODUCTS MAY BE COVERED BY U.S. AND FOREIGN AND/OR PATENTS PENDING. THIS DRAWING IS UNPUBLISHED RELEASED FOR PUBLICATION			
H	SR10-0013-02	BC	BC	8 Jan '02	Tyco Electronics EC N.V. Oostkamp - Belgium NAME: 96 POS FEMALE CONN. ASS'Y ACC. IEC 603-2 WITH ACTION-PIN FOR 2,4-3,2mm P.C.BOARD THK'S			
F1	EH00-1209-00	RvH	R.F.	08-11-00				
F	EH-0855-97	J.G.	J.G.	06-08-97				
E	EH0268-94	R.v.L	J.v.G	19.04.94	DR. DATE: _____ APP. DATE: _____ DWG.No. C-215912 REV.LTR. H SHEET 1 OF 1			
D	H-9879	S.M.	J.v.G	25-06-92				
LTR.	REVISION RECORD	DR.	CHK.	DATE	A3			